

PART OF N 1/2, SECTION 33, T.7N., R.2W., S.L.B. & M.

24-1

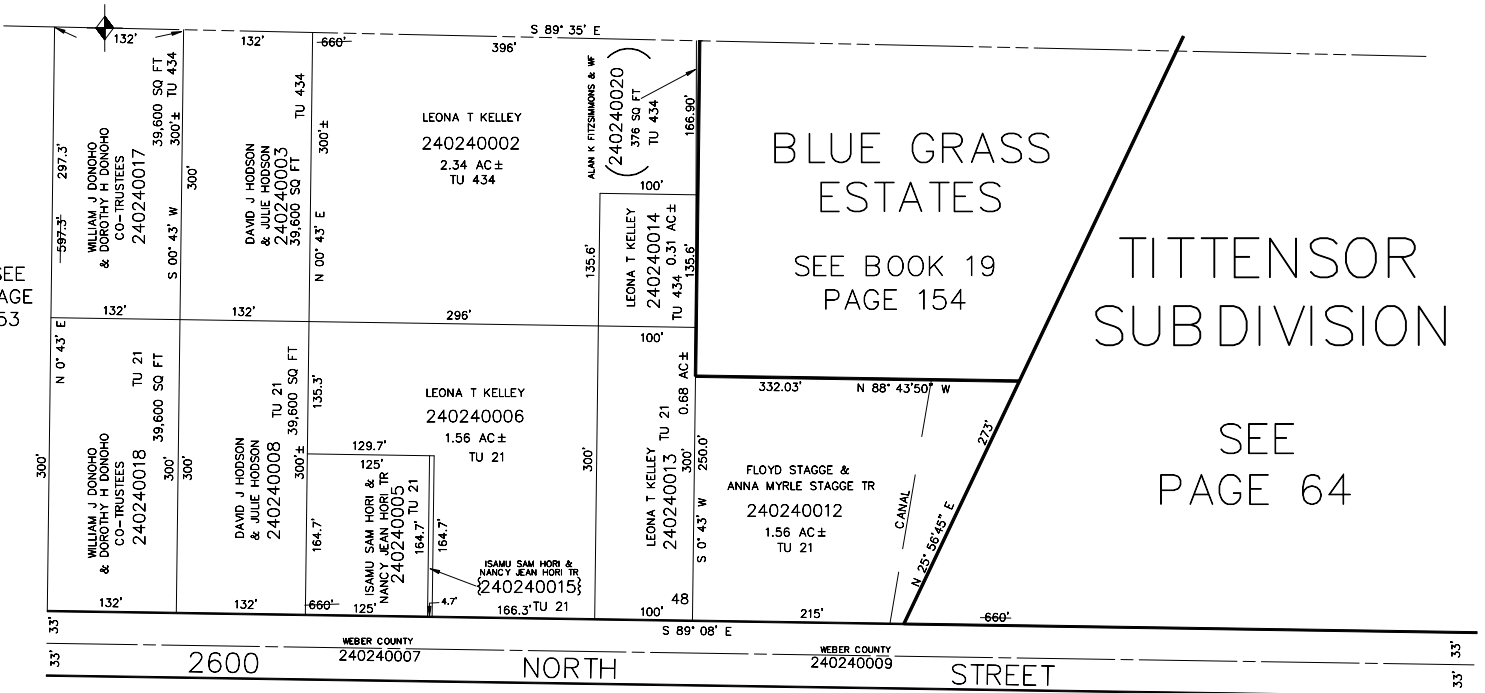
PLAIN CITY
LOTS 47, 48, & 60 PLAT B

TAXING UNIT: 21, 434

SCALE 1" = 100'

SEE BOOK 19, PAGE 24

SEE PAGE 53



SEE BK. 19, PG. 35

SEE PAGE 50

SEE ORIGINAL DEDICATION
PLAT OF PLAIN CITY IN
BOOK 5, PAGE 80 OF RECORDS.